

Safety And Regulatory Information

Safety & Regulatory Information

The following sections contain notices for various countries:

Caution

This product is intended for use with FCC/CE certified computer equipment. Please check the equipment operating/installation manual and/or with the equipment manufacturer to verify/confirm if your equipment is suitable prior to the installation or use of the product.

Notice for USA

FCC Part 15: This equipment has been tested and found to comply with the limits for a Class B digital device, pursuant to Part 15 of the FCC Rules. These limits are designed to provide reasonable protection against harmful interference in a residential installation. This equipment generates, uses and can radiate radio frequency energy and, if not installed and used in accordance with the instructions, may cause harmful interference to radio communications. However, there is no guarantee that interference will not occur in a particular installation. If this equipment does cause harmful interference to radio or television reception, which can be determined by turning the equipment off and on, the user is encouraged to try to correct the interference by one or more of the following measures:

- Reorient or relocate the receiving antenna.
- Increase the separation between the equipment and receiver.
- Connect the equipment into an outlet on a circuit different from that to which the receiver is connected.
- Consult the dealer or an experienced radio/TV technician for help.

This device complies with part 15 of the FCC Rules. Operation is subject to the following two conditions:

1. This device may not cause harmful interference, and
2. This device must accept any interference received, including interference that may cause undesired operation.

Caution

To comply with the limits of the Class B digital device, pursuant to Part 15 of the FCC Rules, this device must be installed with computer equipment certified to comply with Class B limits.

All cables used to connect to the computer and peripherals must be shielded and grounded. Operation with non-certified computers or non-shielded cables may result in interference to radio or television reception.

Modification

Any changes or modifications not expressly approved by the grantee of this device could void the user's authority to operate the device.

Notice for Canada

This Class B digital apparatus complies with Canadian ICES-003.
Cet appareil numérique de la classe B est conforme à la norme NMB-003 du Canada.

Canadian Class B Statement

This digital device does not exceed the Class B limits for radio noise emissions from digital apparatus as set out in the interference-causing equipment standard entitled "Digital Apparatus," ICES-003 of the Department of Communications.

Cet appareil numérique respecte les limites de bruits radioélectriques applicables aux appareils numériques de Classe B prescrites dans la norme sur le matériel brouilleur: "Appareils Numériques," NMB-003 édictée par le ministre des Communications.

MODIFICATION:

Any changes or modifications not expressly approved by the grantee of this device could void the user's authority to operate the device.

Toute modification non approuvée explicitement par le fournisseur de licence de l'appareil peut entraîner l'annulation du droit de l'utilisateur à utiliser l'appareil.

State of California Proposition 65:

WARNING: Handling this product may expose you to chemicals known to the State of California to cause cancer and birth defects or other reproductive harm.

Wash hands after handling.

Explanatory Note

California Safe Drinking Water and Toxic Enforcement Act of 1986 (Proposition 65) requires special product labeling for products containing certain chemicals known to the State of California to cause cancer, birth defects or other reproductive harm. Creative has chosen to provide a warning based on its knowledge about the presence of one or more listed chemicals without attempting to evaluate the level of exposure. With Creative's products, the exposure may be below the Proposition 65 level of concern, or could even be zero. However, out of an abundance of caution, Creative has elected to place the Proposition 65 warning on its products.

August

© 2008 Creative Technology Ltd. All rights reserved. Creative, the Creative logo, TravelSound, Creative TravelSound, X-Fi, ZEN and ZEN X-Fi are trademarks or registered trademarks of Creative Technology Ltd in the U.S. and/or other countries. Specifications are subject to change without notice.

P/N 03MF51250000 Rev. A



DECLARATION OF CONFORMITY

According to the FCC96 208 and ET95-19

Manufacturer/Importer's Name: **Creative Labs, Inc.**

Manufacturer/Importer's Address: **1901 McCarthy Boulevard Milpitas, CA, 95035**
Tel: **(408)428-6600**

declares under its sole responsibility that the product

Trade Name: **Creative Labs**

Model Numbers: **MF5125**

has been tested according to the FCC / CISPR22/97 requirement for Class B devices and found compliant with the following standards:

EMV/EMC: ANSI C63.4 2003, FCC Part 15 Subpart B Complies with Canadian ICES-003 Class B

This device complies with part 15 of the FCC Rules.

Operation is subject to the following two conditions:
(1) This device may not cause harmful interference, and
(2) This device must accept any interference received, including interference that may cause undesirable operation.

Ce matériel est conforme à la section 15 des règles FCC. Son Fonctionnement est soumis aux deux conditions suivantes:

(1) Le matériel ne peut être source D'interférences et
(2) Doit accepter toutes les interférences reçues, Y compris celles pouvant provoquer un fonctionnement indésirable.

Supplementary Information:

Compliance Manager
Creative Labs, Inc.
September 5, 2008

CREATIVE

TRAVELSOUND ZEN X-Fi

EN Quick Start Guide	CZ Krátky Úvod
FR Démarrage Rapide	PL Szybki start
DE Schnellstart	RU Краткие указания
IT Guida Quick Start	HU Gyorskaulaz
ES Guía Rápida	EL Οδηγός εκκίνησης
NL Snel aan de slag	SK Krátky úvod
PT Início Rápido	LT Greita pradžia
NO Lynstart	TR Kullanım
FI Pikaohje	JP クイックスタートガイド
SV Snabbstart	CS 快速开始指南
DA Lynstart	

EN English

Specifications

TravelSound ZEN X-Fi

Power output speaker: **650mW RMS per channel**

Signal-to-Noise Ratio(SNR): **75dB**

Frequency Response: **180Hz - 20kHz**

Battery Life: ~ **15 hours** (Embedded battery)

(Total 10mW output)

Embedded battery

Do not attempt to remove the embedded battery.

The product must be disposed of according to local environmental regulations. To replace the battery, return your product to your regional support office. For product service information, go to www.creative.com.

CAUTION: Risk of explosion if battery is replaced by incorrect types.

Waste Electrical and Electronic Equipment (WEEE)

Symbol

The use of the WEEE Symbol indicates that this product may not be treated as household waste. By ensuring this product is disposed of correctly, you will help protect the environment. For more detailed information about the recycling of this product, please contact your local authority, your household waste disposal service provider or the shop where you purchased the product.

For more detailed information about the recycling of this product, please contact your local authority, your household waste disposal service provider or the shop where you purchased the product.

For more detailed information about the recycling of this product, please contact your local authority, your household waste disposal service provider or the shop where you purchased the product.

For more detailed information about the recycling of this product, please contact your local authority, your household waste disposal service provider or the shop where you purchased the product.

For more detailed information about the recycling of this product, please contact your local authority, your household waste disposal service provider or the shop where you purchased the product.

For more detailed information about the recycling of this product, please contact your local authority, your household waste disposal service provider or the shop where you purchased the product.

For more detailed information about the recycling of this product, please contact your local authority, your household waste disposal service provider or the shop where you purchased the product.

For more detailed information about the recycling of this product, please contact your local authority, your household waste disposal service provider or the shop where you purchased the product.

For more detailed information about the recycling of this product, please contact your local authority, your household waste disposal service provider or the shop where you purchased the product.

For more detailed information about the recycling of this product, please contact your local authority, your household waste disposal service provider or the shop where you purchased the product.

For more detailed information about the recycling of this product, please contact your local authority, your household waste disposal service provider or the shop where you purchased the product.

For more detailed information about the recycling of this product, please contact your local authority, your household waste disposal service provider or the shop where you purchased the product.

For more detailed information about the recycling of this product, please contact your local authority, your household waste disposal service provider or the shop where you purchased the product.

For more detailed information about the recycling of this product, please contact your local authority, your household waste disposal service provider or the shop where you purchased the product.

For more detailed information about the recycling of this product, please contact your local authority, your household waste disposal service provider or the shop where you purchased the product.

For more detailed information about the recycling of this product, please contact your local authority, your household waste disposal service provider or the shop where you purchased the product.

For more detailed information about the recycling of this product, please contact your local authority, your household waste disposal service provider or the shop where you purchased the product.

For more detailed information about the recycling of this product, please contact your local authority, your household waste disposal service provider or the shop where you purchased the product.

For more detailed information about the recycling of this product, please contact your local authority, your household waste disposal service provider or the shop where you purchased the product.

For more detailed information about the recycling of this product, please contact your local authority, your household waste disposal service provider or the shop where you purchased the product.

For more detailed information about the recycling of this product, please contact your local authority, your household waste disposal service provider or the shop where you purchased the product.

For more detailed information about the recycling of this product, please contact your local authority, your household waste disposal service provider or the shop where you purchased the product.

For more detailed information about the recycling of this product, please contact your local authority, your household waste disposal service provider or the shop where you purchased the product.

For more detailed information about the recycling of this product, please contact your local authority, your household waste disposal service provider or the shop where you purchased the product.

For more detailed information about the recycling of this product, please contact your local authority, your household waste disposal service provider or the shop where you purchased the product.

For more detailed information about the recycling of this product, please contact your local authority, your household waste disposal service provider or the shop where you purchased the product.

For more detailed information about the recycling of this product, please contact your local authority, your household waste disposal service provider or the shop where you purchased the product.

For more detailed information about the recycling of this product, please contact your local authority, your household waste disposal service provider or the shop where you purchased the product.

For more detailed information about the recycling of this product, please contact your local authority, your household waste disposal service provider or the shop where you purchased the product.

For more detailed information about the recycling of this product, please contact your local authority, your household waste disposal service provider or the shop where you purchased the product.

For more detailed information about the recycling of this product, please contact your local authority, your household waste disposal service provider or the shop where you purchased the product.

For more detailed information about the recycling of this product, please contact your local authority, your household waste disposal service provider or the shop where you purchased the product.

For more detailed information about the recycling of this product, please contact your local authority, your household waste disposal service provider or the shop where you purchased the product.

For more detailed information about the recycling of this product, please contact your local authority, your household waste disposal service provider or the shop where you purchased the product.

For more detailed information about the recycling of this product, please contact your local authority, your household waste disposal service provider or the shop where you purchased the product.

For more detailed information about the recycling of this product, please contact your local authority, your household waste disposal service provider or the shop where you purchased the product.

For more detailed information about the recycling of this product, please contact your local authority, your household waste disposal service provider or the shop where you purchased the product.

For more detailed information about the recycling of this product, please contact your local authority, your household waste disposal service provider or the shop where you purchased the product.

For more detailed information about the recycling of this product, please contact your local authority, your household waste disposal service provider or the shop where you purchased the product.

For more detailed information about the recycling of this product, please contact your local authority, your household waste disposal service provider or the shop where you purchased the product.

For more detailed information about the recycling of this product, please contact your local authority, your household waste disposal service provider or the shop where you purchased the product.

For more detailed information about the recycling of this product, please contact your local authority, your household waste disposal service provider or the shop where you purchased the product.

For more detailed information about the recycling of this product, please contact your local authority, your household waste disposal service provider or the shop where you purchased the product.

For more detailed information about the recycling of this product, please contact your local authority, your household waste disposal service provider or the shop where you purchased the product.

For more detailed information about the recycling of this product, please contact your local authority, your household waste disposal service provider or the shop where you purchased the product.

For more detailed information about the recycling of this product, please contact your local authority, your household waste disposal service provider or the shop where you purchased the product.

For more detailed information about the recycling of this product, please contact your local authority, your household waste disposal service provider or the shop where you purchased the product.

FR Français

Specifications

TravelSound ZEN X-Fi

Sortie de l'alimentation Haut-parleur: **650mWatts RMS par canal**

Rapport signal/bruit(SNR): **75dB**

Réponse en fréquence: **180Hz - 20kHz**

Autonomie: ~ **15 heures** (Batterie intégrée)

(Total 10mW en sortie)

Batterie intégrée

Ne tentez pas de retirer la batterie intégrée.

Le produit doit être éliminé en conformité avec les réglementations environnementales locales. Pour remplacer la batterie, renvoyez votre produit à votre bureau d'assistance régionale. Pour obtenir des informations sur la maintenance du produit, consultez le site www.creative.com.

ATTENTION: Risque d'explosion si la batterie est remplacée par un modèle inapproprié.

Symbole WEEE (Waste Electrical and Electronic Equipment, Déchets électriques et d'équipement électronique)

L'utilisation du symbole WEEE indique que ce produit ne peut pas être traité comme déchet domestique. Assurez-vous de vous débarrasser de ce produit selon les lois en vigueur. Vous aiderez ainsi à protéger l'environnement. Pour plus d'informations détaillées sur le recyclage de ce produit, veuillez contacter les autorités locales, le fournisseur de service de mise au rebut de déchets domestiques ou le magasin où vous avez acheté le produit.

For more detailed information about the recycling of this product, please contact your local authority, your household waste disposal service provider or the shop where you purchased the product.

For more detailed information about the recycling of this product, please contact your local authority, your household waste disposal service provider or the shop where you purchased the product.

For more detailed information about the recycling of this product, please contact your local authority, your household waste disposal service provider or the shop where you purchased the product.

For more detailed information about the recycling of this product, please contact your local authority, your household waste disposal service provider or the shop where you purchased the product.

For more detailed information about the recycling of this product, please contact your local authority, your household waste disposal service provider or the shop where you purchased the product.

For more detailed information about the recycling of this product, please contact your local authority, your household waste disposal service provider or the shop where you purchased the product.

For more detailed information about the recycling of this product, please contact your local authority, your household waste disposal service provider or the shop where you purchased the product.

For more detailed information about the recycling of this product, please contact your local authority, your household waste disposal service provider or the shop where you purchased the product.

For more detailed information about the recycling of this product, please contact your local authority, your household waste disposal service provider or the shop where you purchased the product.

For more detailed information about the recycling of this product, please contact your local authority, your household waste disposal service provider or the shop where you purchased the product.

For more detailed information about the recycling of this product, please contact your local authority, your household waste disposal service provider or the shop where you purchased the product.

For more detailed information about the recycling of this product, please contact your local authority, your household waste disposal service provider or the shop where you purchased the product.

For more detailed information about the recycling of this product, please contact your local authority, your household waste disposal service provider or the shop where you purchased the product.

For more detailed information about the recycling of this product, please contact your local authority, your household waste disposal service provider or the shop where you purchased the product.

For more detailed information about the recycling of this product, please contact your local authority, your household waste disposal service provider or the shop where you purchased the product.

For more detailed information about the recycling of this product, please contact your local authority, your household waste disposal service provider or the shop where you purchased the product.

For more detailed information about the recycling of this product, please contact your local authority, your household waste disposal service provider or the shop where you purchased the product.

For more detailed information about the recycling of this product, please contact your local authority, your household waste disposal service provider or the shop where you purchased the product.

For more detailed information about the recycling of this product, please contact your local authority, your household waste disposal service provider or the shop where you purchased the product.

For more detailed information about the recycling of this product, please contact your local authority, your household waste disposal service provider or the shop where you purchased the product.

For more detailed information about the recycling of this product, please contact your local authority, your household waste disposal service provider or the shop where you purchased the product.

For more detailed information about the recycling of this product, please contact your local authority, your household waste disposal service provider or the shop where you purchased the product.

For more detailed information about the recycling of this product, please contact your local authority, your household waste disposal service provider or the shop where you purchased the product.

For more detailed information about the recycling of this product, please contact your local authority, your household waste disposal service provider or the shop where you purchased the product.

For more detailed information about the recycling of this product, please contact your local authority, your household waste disposal service provider or the shop where you purchased the product.

For more detailed information about the recycling of this product, please contact your local authority, your household waste disposal service provider or the shop where you purchased the product.

For more detailed information about the recycling of this product, please contact your local authority, your household waste disposal service provider or the shop where you purchased the product.

For more detailed information about the recycling of this product, please contact your local authority, your household waste disposal service provider or the shop where you purchased the product.

For more detailed information about the recycling of this product, please contact your local authority, your household waste disposal service provider or the shop where you purchased the product.

For more detailed information about the recycling of this product, please contact your local authority, your household waste disposal service provider or the shop where you purchased the product.

For more detailed information about the recycling of this product, please contact your local authority, your household waste disposal service provider or the shop where you purchased the product.

For more detailed information about the recycling of this product, please contact your local authority, your household waste disposal service provider or the shop where you purchased the product.

For more detailed information about the recycling of this product, please contact your local authority, your household waste disposal service provider or the shop where you purchased the product.

For more detailed information about the recycling of this product, please contact your local authority, your household waste disposal service provider or the shop where you purchased the product.

For more detailed information about the recycling of this product, please contact your local authority, your household waste disposal service provider or the shop where you purchased the product.

For more detailed information about the recycling of this product, please contact your local authority, your household waste disposal service provider or the shop where you purchased the product.

For more detailed information about the recycling of this product, please contact your local authority, your household waste disposal service provider or the shop where you purchased the product.

For more detailed information about the recycling of this product, please contact your local authority, your household waste disposal service provider or the shop where you purchased the product.

For more detailed information about the recycling of this product, please contact your local authority, your household waste disposal service provider or the shop where you purchased the product.

For more detailed information about the recycling of this product, please contact your local authority, your household waste disposal service provider or the shop where you purchased the product.

For more detailed information about the recycling of this product, please contact your local authority, your household waste disposal service provider or the shop where you purchased the product.

For more detailed information about the recycling of this product, please contact your local authority, your household waste disposal service provider or the shop where you purchased the product.

For more detailed information about the recycling of this product, please contact your local authority, your household waste disposal service provider or the shop where you purchased the product.

For more detailed information about the recycling of this product, please contact your local authority, your household waste disposal service provider or the shop where you purchased the product.

For more detailed information about the recycling of this product, please contact your local authority, your household waste disposal service provider or the shop where you purchased the product.

For more detailed information about the recycling of this product, please contact your local authority, your household waste disposal service provider or the shop where you purchased the product.

DE Deutsch

Technische Daten

TravelSound ZEN X-Fi

Ausgabeleistung Lautsprecher: **650mWatt RMS pro Kanal**

Rauschabstand(SNR): **75dB**

Frequenzgang: **180Hz bis 20kHz**

Batterielaufzeit: ~ **15 Stunden** (Integrierte Batterie)

(Insgesamt 10mW output)

Integrierte Batterie

Versuchen Sie nicht, die integrierte Batterie zu entfernen.

Das Produkt muss ordnungsgemäß entsprechend der vor Ort geltenden Umweltrichtlinien entsorgt werden. Um die Batterie zu entfernen, geben Sie Ihr Produkt in der zuständigen lokalen Stelle ab. Weitere Informationen zum Produkt-Service erhalten Sie unter www.creative.com.

ACHTUNG: Wenn Sie einen falschen Akku einsetzen, besteht Explosionsgefahr.

WEEE - (Waste Electrical and Electronic Equipment)-Symbol

Durch Verwendung des WEEE-Symbols weisen wir darauf hin, dass dieses Produkt nicht als normaler Haushaltsmüll behandelt werden darf. Sie tragen zum Schutz der Umwelt bei, indem Sie dieses Produkt korrekt entsorgen. Genauere Informationen zum Recycling dieses Produkts erhalten Sie von Ihrer Stadtverwaltung, von Ihrem Müllabfuhrunternehmen oder im Laden, in dem Sie das Produkt erworben haben.

For more detailed information about the recycling of this product, please contact your local authority, your household waste disposal service provider or the shop where you purchased the product.

For more detailed information about the recycling of this product, please contact your local authority, your household waste disposal service provider or the shop where you purchased the product.

For more detailed information about the recycling of this product, please contact your local authority, your household waste disposal service provider or the shop where you purchased the product.

For more detailed information about the recycling of this product, please contact your local authority, your household waste disposal service provider or the shop where you purchased the product.

For more detailed information about the recycling of this product, please contact your local authority, your household waste disposal service provider or the shop where you purchased the product.

For more detailed information about the recycling of this product, please contact your local authority, your household waste disposal service provider or the shop where you purchased the product.

For more detailed information about the recycling of this product, please contact your local authority, your household waste disposal service provider or the shop where you purchased the product.

For more detailed information about the recycling of this product, please contact your local authority, your household waste disposal service provider or the shop where you purchased the product.

For more detailed information about the recycling of this product, please contact your local authority, your household waste disposal service provider or the shop where you purchased the product.

For more detailed information about the recycling of this product, please contact your local authority, your household waste disposal service provider or the shop where you purchased the product.

For more detailed information about the recycling of this product, please contact your local authority, your household waste disposal service provider or the shop where you purchased the product.

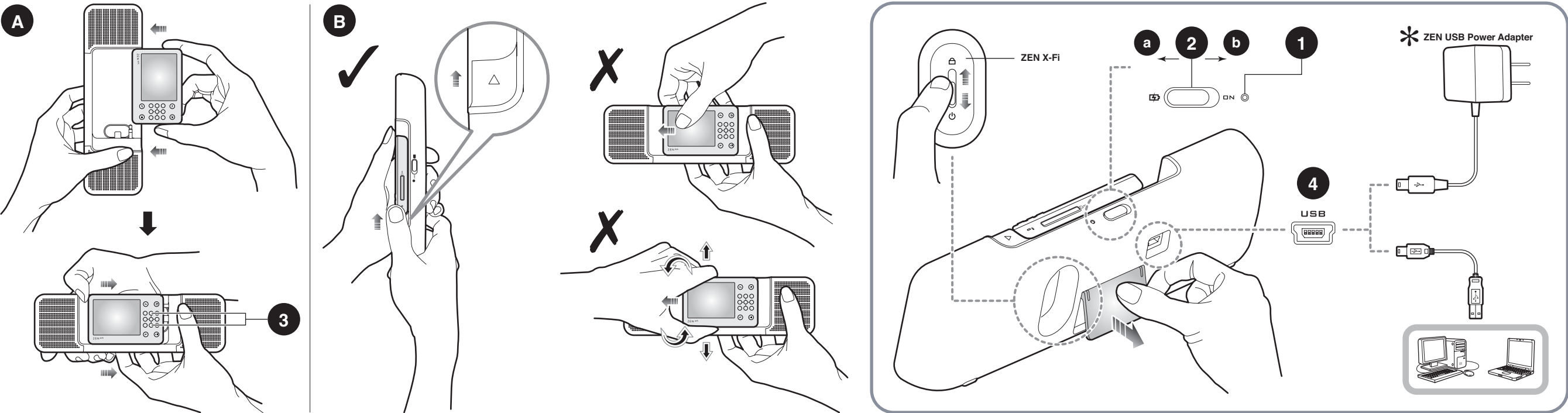
For more detailed information about the recycling of this product, please contact your local authority, your household waste disposal service provider or the shop where you purchased the product.

For more detailed information about the recycling of this product, please contact your local authority, your household waste disposal service provider or the shop where you purchased the product.

For more detailed information about the recycling of this product, please contact your local authority, your household waste disposal service provider or the shop where you purchased the product.

For more detailed information about the recycling of this product, please contact your local authority, your household waste

• Connectivity Diagram • Schéma de connexion • Anschluss-Diagramm • Schema delle connessioni • Diagrama de conectivität • Aansluitingsschema • Diagrama de Ligações • Kopplingskjema • Liitittäkaavio • Kopplingsbeskrivning • Tilslutningsdiagram
 • Schéma zapojení • Schemat połączeń • Схема подключения • Csatlakoztatás • Διεύθυνση συνδεσιμότητας • Schéma zapojenia • Junglammumo schema • Balant diyagram • 接続図 • 连接示意图



* Optional (sold separately) • Facultatif (vendu séparément) • Zusätzlicher (separat erhältlich) • Opzionale (venduto separatamente) • Opcional (se vende por separado) • Optioneel (wordt apart verkocht) • Opțional (vândut în parte) • Ekstrastruyt (selges separat) • Lisävarustet (myydään erikseen) • Tillbehör (säljs separat)
 * Tibehor (selges særskilt) • Voitelná (satelitních reproduktů) • Opcjonalne (do nabycia osobno) • Необязательно (приобретается отдельно) • Opcjonalis (kūlön kei megvásárolnia) • Προαιρετικά (Πωλείται ξεχωριστά) • Voitelný doplnok (prodává se samostatně) • Papildoma (parduodama atskirai)
 www.creative.com

EN English	FR Français	DE Deutsch	IT Italiano	ES Español	NL Nederlands	PT Português
A Docking Slide the player in firmly, as shown.	Connexion Faites glisser le lecteur fermement comme indiqué.	Einsetzen Schieben Sie den Player genau in die Öffnung (siehe Abbildung).	Come agganciare Inserire il lettore saldamente, come da figura.	Acoplamiento Deslice firmemente el reproductor para introducirlo tal como se muestra.	Koppelen Schuif de speler goed naar binnen, zoals afgebeeld.	Para introduzir na base de ancoragem Faça deslizar o leitor firmemente, como indicado.
B Undocking Hold the player firmly by the sides and slide it out. Do not press on the player's LCD. Caution: When docking or undocking your ZEN X-Fi player, do not twist or turn your player. This reduces the risk of damaging your player and/or TravelSound connectors.	Déconnexion Maintenez le lecteur fermement par les côtés et tirez pour l'extraire. N'appuyez pas sur l'écran LCD. Attention : Lors de la connexion ou de la déconnexion de votre lecteur ZEN X-Fi et du socle d'encrage, insérez le lecteur bien droit, sans aucune torsion ni rotation. Ceci réduit le risque d'endommagement des connecteurs du lecteur et du TravelSound.	Entnehmen Halten Sie den Player an beiden Seiten fest und ziehen Sie ihn heraus. Drücken Sie dabei nicht auf das Display. Attention : Schließen Sie den ZEN X-Fi-Player vorsichtig an bzw. entfernen Sie ihn vorsichtig, ohne ihn dabei zu drehen oder zu verketten. So vermeiden Sie eine Beschädigung der Anschlüsse am Player und/oder TravelSound.	Come sganciare Tenere saldamente il lettore dai lati e sganciarlo. Non premere sul display LCD del lettore. Attenzione : Non piegare o girare il lettore ZEN X-Fi durante l'inserimento o l'estrazione dall'aggancio in modo da ridurre il rischio di danneggiare il lettore e/o i connettori TravelSound.	Desacoplamiento Agarre el reproductor firmemente por los laterales y deslícelo hacia fuera. No presione la pantalla LCD del reproductor. Advertencia: No gire ni voltee el reproductor ZEN X-Fi al conectarlo o desconectarlo. De esta modo se reduce el riesgo de dañar el reproductor o los conectores de TravelSound.	Ontkoppelen Houd de speler goed aan beide zijden vast en schuif hem naar buiten. Druk niet op het LCD-scherm van de speler. Waarschuwing: Draai of buig de speler niet als u de ZEN X-Fi-speler dock of loskoppelt. Hiermee loopt u risico op schade aan de connectoren van uw speler en/of TravelSound te beschadigen.	Para retirar da base de ancoragem Segure o leitor firmemente pelas laterais e faça-o deslizar para fora. Não pressione o LCD do leitor. Cuidado: Quando coloca ou retira o seu leitor ZEN X-Fi da dock, não torça ou vire o leitor. Isto reduz o risco de danos nos conectores do seu leitor e/ou TravelSound.
1 LED Indicator Green – Speaker is powered on. Amber – Speaker battery is charging. Red – LED turns off when battery is fully charged. Red – Speaker battery power is low.	Signification du voyant Vert – Le haut-parleur est sous tension. Orange – La batterie du haut-parleur est en cours de chargement. Le voyant s'éteint lorsque la batterie est totalement rechargée. Rouge – La batterie du haut-parleur est presque déchargée.	LED-Anzeige Grün – Lautsprecher ist eingeschaltet. Orange – Akku wird geladen. Die LED erlischt, wenn der Akku vollständig aufgeladen ist. Rot – Niedriger Akkuladestand.	Indicazione LED Verde – Altoparlante acceso. Ambr - Batteria altoparlante in fase di ricarica. Il LED si spegne quando la batteria è carica. Rosso - La batteria dell'altoparlante è scarica.	Indicadores LED Verde – Altoparlante encendido. Ambar – Batería del altavoz se está cargando. El indicador LED se apaga cuando la batería está completamente cargada. Rojo – La potencia de la batería del altavoz es baja.	LED-lampje Groen – luidspreker is ingeschakeld. Oranje – batterij luidspreker wordt opgeladen. Lampje dooft af als de batterij volledig is opgeladen. Rood – batterij luidspreker is bijna leeg.	Indicador LED Verde – A coluna está ligada. Ambar – A bateria da coluna está a carregar. O LED desliga-se quando estiver totalmente carregada. Vermelho – A bateria da coluna está com pouca carga.
2 a To charge your player and/or the speaker's rechargeable battery with the USB cable via 2. To charge player Dock player into the speaker (after a few seconds 1 will be off), when player is fully charged 2 turns amber. To charge speaker Turns amber when charging. When fully charged, 2 turns off.	Pour recharger la batterie rechargeable de votre lecteur ou de votre haut-parleur à l'aide du câble USB via 2. Pour recharger le lecteur Dock player into the speaker (after a few seconds 1 s'éteint), lorsque le lecteur est rechargé 2 passe au rouge. Pour recharger le haut-parleur 2 passe au rouge en cours de charge. Une fois chargé, 2 s'éteint.	Der Akku Ihres Players und/oder Lautsprechers wird mit dem USB-Kabel über 2 aufgeladen. Aufladen des Players Halten Sie den Player am Lautsprecher an (1 verlischt nach ein paar Sekunden). Wenn der Player vollständig aufgeladen ist, wechselt 2 zu Gelb. Aufladen des Lautsprechers Beim Aufladen des Lautsprechers wechselt 2 zu Gelb. Wenn der Lautsprecher vollständig aufgeladen ist, erlischt 2.	Per caricare la batteria ricaricabile del lettore e/o dell'altoparlante con il cavo USB tramite 2. Per caricare il lettore Collegare il lettore all'altoparlante (1 si spegnerà dopo pochi secondi); quando il lettore è completamente carico, 2 diventa giallo. Per caricare l'altoparlante 2 diventa giallo durante la carica. Quando l'altoparlante è completamente carico, 2 si spegne.	Para cargar la batería recargable del reproductor y/o altavoz con el cable USB a través de 2. Para cargar el reproductor Acople el reproductor al altavoz (después de unos segundos 1 se apagará), cuando el reproductor esté completamente cargado, 2 se pone de color ámbar. Para cargar el altavoz 2 se pone de color ámbar cuando está cargando. Cuando está completamente cargado, 2 se apaga.	De oplaadbare batterij van de speler en/of luidspreker via 2 met de USB-kabel laden. De speler laden Zet speler vast op luidspreker (na enkele seconden gaat 1 uit). Wanneer speler volledig geladen is, wordt 2 oranje. De luidspreker laden 2 oranje tijdens het laden. 1 schakelt uit wanneer de batterij volledig is geladen.	Para carregar a bateria recarregável do leitor e/ou do altifalante com um cabo USB via 2. Para carregar o leitor Ancore o leitor ao altifalante (após alguns segundos, o 1 apaga-se), quando o leitor estiver totalmente carregado, o 2 fica âmbar. Para carregar o altifalante O 2 fica âmbar enquanto está a carregar. Quando totalmente carregado, o 2 apaga-se.
2 b Turns the speaker power on 1 illuminates in green.	Met le haut-parleur sous tension 1 pour allumer le voyant en vert.	Zum Einschalten des Lautsprechers 1 wird grün angezeigt.	Accende l'alimentazione dell'altoparlante 1 acceso con luce verde.	Enciende el altavoz 1 se ilumina en verde.	Schakelt de luidspreker in 1 brandt groen.	Liga a coluna é apresentado um 1 verde.
3 Volume Control	Réglage du volume	Lautstärkeregelung	Controllo volume	Control de volumen	Volumeregeling	Controlo de volume
4 For music/data transfer between ZEN and PC	Pour transférer de la musique/ des données entre le ZEN et un PC	Dient zum Musik-/Datentransfer zwischen dem ZEN-Player und Ihrem PC	Per il trasferimento di musica e dati da ZEN al PC	Para transferencia de datos o música entre el ZEN y el PC	Voor overdracht van muziek/ gegevens tussen ZEN en PC	Para transferência de música/ dados entre o ZEN e o PC
NOTE: Ensure ZEN is firmly seated into the connectors of the docking cradle; otherwise you may experience no sound.	REMARQUE: Assurez-vous que votre ZEN est correctement inséré sur le connecteur du support de docking, sinon vous risquez de ne percevoir aucun son.	HINWEIS: Vergewissern Sie sich, dass der ZEN fest im Docking-Anschluss sitzt. Möglicherweise ist sonst kein Sound zu hören.	NOTA: Assicurarsi che il ZEN sia posizionato correttamente nel connettore del supporto per docking; in caso contrario, non si sentirà l'audio.	NOTA: Asegúrese que el ZEN está bien colocado en el conector del soporte; de lo contrario, es posible que no se oiga el sonido.	OPMERKING: Zorg dat de ZEN stevig is geplaatst in de aansluiting van het dockingsstation, anders wordt er mogelijk geen geluid weergegeven.	NOTE: Verifique se o ZEN está bem posicionado no conector da base de dockingstation, anders wordt er mogelijk geen geluid weergegeven.

NO Norsk	FI Suomi	SV Svenska	DA Dansk	CZ Český	PL Polski	RU Русский
A Sette i dock Sett spillet inn på plass, som vist.	Telakointi Tylmästä soitin kunnolla sisään kuvon ottaamalla tavalla.	Docking Sätt in spelaren som på bilden.	Tilslutning til docken Sæt spillet ind i ned i fast greb som vist.	Umístění do dokovací stanice Zasuňte pevně přehrávač do dokovací stanice tak, jak je to zobrazováno na obrázku.	Dokowanie Odstawiać wsłuch odtwarzacz w pokazany sposób.	Подсоединение к док-станции Полно вставьте плеер, как показано на рисунке.
B Fjerne fra dock Ikke tryk på spillers sider, og dra den ut. Ikke trykk på LCD-skjermen til spillet. Forståelse! Når du setter i eller tar ut ZEN X-Fi-spillet, må du ikke vri eller snu spillet. Da kan du risikere å skade spillers og/eller TravelSound-tilkoblingspunktene.	Irotus Pleeriä soittimia luvastaan irtottaessa ja vedä se ulos. Älä paina soittimen nappulenkäytösäädin. Varoitus! Älä kierrä tai kallista ZEN X-Fi-soittinta, kun tekoalit sitä tai irrotat sitä telakointiasemasta. Näin voit välttää soittimen ja/ tai TravelSound liittimen vaurioitumista.	Avdockning Vicka ut spelaren sidor och dra ut den. Tryck inte på spelarens LCD-skärm. Förståelsestärker! Vicka inte eller vrid på ZEN X-Fi-spelaren när du dockar eller dockar ut den. Däremot riskerar du risken för att skada spelaren och/eller TravelSound-kontakterna.	Frakoblend fra docken Vicka ut spillet med et fast greb, og træk den ud. Tryk ikke på LCD-skærmen på spillet. Forståelse! Undgå at vende eller dreje spillet, når du anbringer ZEN X-Fi-spillet i eller fjerner det fra docken. Dermed reducerer du risikoen for beskadigelse af spilleren og/eller TravelSound.	Vyjmuti z dokovací stanice Uložte pevně přehrávač za strany a vystruťe ho. Nevypírejte tak na displej LCD přehrávače. Upozornění: Při vložení přehrávače ZEN X-Fi do doku či vyjmutí z něj přehrávačem riskujete ani ne porušení. Snížíte tím riziko poškození konektorů přehrávače a/nebo zařízení TravelSound.	Oddokowanie Topniąc odtwarzacz za jego bok, ostrożnie go wyjmij. Nie naciskaj ekranu LCD odtwarzacza. Ostrzeżenie: Podczas dokowania lub oddokowania odtwarzacza ZEN X-Fi nie należy obracać odtwarzacza ani nie poruszać. Dzięki temu zmniejszamy ryzyko uszkodzenia odtwarzacza i/lub złącza urządzenia TravelSound.	Отсоединение от док-станции Тщательно отставьте плеер и выньте его из док-станции. Будьте внимательны: не нажимайте на ЖК-экран. Предупреждение: Не поворачивайте плеер ZEN X-Fi при подключении и отключении. Это уменьшает риск повреждения плеера и разъемов сплитфонического устройства.
1 LED-lampe Green: Høyttaleren er på. Orange: Høyttalerens batteri lades. LED-lampen skinner når batteriet er fullt oppladet. Red: Det er lite strøm i høyttalerbatteriet.	Merkivalvo Vihreä – kaulutin päällä. Keltainen – kaulutimen akku latautuu. Merkkivalvo sammuu, kun akku on ladattu. Punainen – kaulutimen akun virta heikko.	Lysdiödsindikation Grön – Högaltarlarmen är på. Gul – Högaltarlarmet laddas. Lysdiöden släcker när batteriet är fullt opladdat. Röd – Högaltarlarmet är svagt.	Indikation via lysdiöde Grön – Højttaleren er tændt. Gul – Højttalerens batteri oplades. Lysdiöden slukker, når batteriet er fuldt opladet. Rød – Højttalerens batteri er ved at løbe tør.	Indíce LED diödu Zelená – reproduktor je zapnutý. Žlutá – akumulátor reproduktoru se nabíjí. LED diöda po úplném nabití indikuje 2 žlutě. Červená – akumulátor reproduktoru je téměř vybitý.	Diöda LED Zielona – głośnik jest włączony. Żółta – trwa ładowanie baterii głośnika. Diöda LED wyłącza się po całkowitym naładowaniu baterii. Czerwona – poziom naładowania baterii głośnika jest niski.	Светодиодные индикаторы Зеленый – динамик включен. Желтый – идет зарядка аккумуляторной батареи динамика. Когда батарея полностью заряжена, индикатор гаснет. Красный – низкий заряд батареи.
2 a Lada spilleren på opplydare batteri med USB-kabelen via 2. Lade spilleren Plasjer spillet inn på høyttaleren (etter noen få sekunder 1 slukkes). Når spilleren er fulladet, lyser 2 gult. Lade høyttalerens batteri 1 lyser gult når den lades. Når den er fulladet, slukkes 1.	Soittimen ja/tai kaulutimen laddattavan akun lataaminen via 2. Lada spilleren Telokki soitin kaulutimen päälle (jotkut muutaman sekunnin kuluessa). Kun soitin on täysin latautunut, 1 sammuu. Ladaa kaulutimen 1 palaa laddatessa keltaisena. Kun kaulutin on kokonaan latautunut, 1 sammuu.	Ladda spelaren och/eller högtalarens laddningsbara batteri med USB-nätadaptern via 2. Ladda spelaren Docka spelaren till högtalaren (efter några sekunder släcks 1 av). När spelaren är fulladdad blir 2 gul. Ladda högtalaren 1 är gul under laddning. När högtalaren är fulladdad släcks 1 av.	Sådan oplader du afsplillerens og/eller højttalerens genopladdbare batteri med USB-kabel via 2. Sådan oplader du afsplilleren Placer afsplilleren i højttalerens dock (efter nogle sekunder slukkes 1). Når afsplilleren er fuldt opladet, lyser 2 gult. Sådan oplader du højttaleren 1 lyser gult under opladning. Når højttaleren er fuldt opladet, slukkes 1.	Nabíjení přehrávače a/nebo nabíjení baterie reproduktoru pomocí kabelu USB přes port 2. Nabíjení přehrávače Vložte přehrávač do doku na reproduktor (indikátor 1 za několik sekund zhasne). Až bude přehrávač úplně nabitý, rozsvítí se indikátor 2 žlutě. Nabíjení reproduktoru Indikátor 1 při nabíjení svítí žlutě. Po úplném nabití indikátor 2 zhasne.	Ladowanie akumulatorów odtwarzacza i/lub głośnika za pomocą kabla USB przez złącze 2. Ladowanie odtwarzacza Pokoń odtwarzacz na głośniku (po paru sekundach diöda 1 zgaśnie). Po naładowaniu odtwarzacza diöda 2 zmieni kolor na żółty. Ladowanie głośnika Podczas ładowania diöda 1 zmienia kolor na czerwony. Po zakończeniu ładowania diöda 1 zgaśnie.	Для зарядки плеера и/или аккумулятора док-станции с помощью кабеля USB используйте 2. Для зарядки плеера Установите плеер на подставку (через несколько секунд после установки 1 погаснет), когда плеер полностью зарядится. Для зарядки аккумулятора 1 загорится желтым. Для зарядки док-станции Во время зарядки 1 светится. Когда зарядка полностью завершена, 1 гаснет.
2 b Slår høyttaleren på 1 lyser grønt.	Kaulutimen kytkeminen päälle 1 palaa vihreänä.	Sätter på högtalarströmmen 1 lyser grönt.	Tænder for strømmen til højttaleren 1 lyser grønt.	Zapne napájení reproduktoru indikátor 1 se rozsvítí zeleně.	Włącza głośnik 1 świeci się na zielono.	Включите питание динамика индикатор 1 загорается зеленым.
3 Volumkontroll	Äänvoimakkuuden säädin	Volymkontroll	Lydstyrkeknop	Ovládnání hlasitosti	Regulacja głośności	Регулятор громкости
4 For overføring av musikk/ data mellom ZEN og PC	ZEN ja pöytä- tai kannettavan tietokoneen välinen musiikin tai tietojen siirto	För överföring av musik/data mellan ZEN och PC	Til overførsel af musik/data mellem ZEN og pc	Pro přenos dat mezi přehrávačem ZEN a osobním počítačem či PC	Służby do przenoszenia muzyki/danych między odtwarzaczem ZEN a komputerem	Для передачи музыки или данных между ZEN и персональным или переносным компьютером
OBS! Kontroller at ZEN-er ikke ordentlig i kontakten på sokkelen, ellers vil du ikke høre lyd.	HUOMAUTUS: Varmista, että ZEN on kunnolla kiinni telakointiaseman liittimestä. Muutoin äänää ei kuulu.	OBS! Se till att ZEN-nätadaptern sitter ordentligt i dockingshållaren, annars kanske du inte hör något ljud.	BEMÆRK! Kontroller, at ZEN sidder helt fast i dockingholderens stik, ellers vil du ikke høre lyd.	POZNÁMKA: Přehrávač ZEN musí být pevně uzasen do konektoru lžka doku, jinak se může stát, že nic neslyšíte.	UWAGA: Upewnij się, że urządzenie ZEN jest dobrze podłączone do złącza dokowania; w przeciwnym razie dźwięk może nie być słyszalny.	ПРИМЕЧАНИЕ: Убедитесь, что устройство ZEN надежно вставлено в разъем сплитфонического узла; иначе звук может отсутствовать.

HU Magyar	EL Ελληνικά	SK Slovensky	LT Lietuvių	TR Türkçe	JP 日本語	CS 简体中文
A Dokkolas Csúsztassa a lejátszó a helyére az ábrán látható módon.	Σύνδεση στη βάση Εισαγάγετε στη συσκευή όπως φαίνεται στην εικόνα.	Umístění do dokovací stanice Zasuňte pevně přehrávač do dokovací stanice tak, ako je zobrazováno na obrázku.	Sujungimas Įstatykite leistuvą patikimai, kaip parodyta.	Yerleştirme Oynatıcınıza gösterildiği şekilde kaydırın.	プレーヤーのドッキング 図のようにプレーヤーをスライドしっかりと挿入します。	设备连接 请按图示，将播放器放入。
B Kivétel a bővíthető Függetlenül a bővíthető a oldalán, és csúsztassa ki. Ne nyomja meg a lejátszó LCD-képernyőjét. Vigyázat! A ZEN X-Fi lejátszó dokkolása vagy kivevése során ne fordítsa el vagy billentse oldalra a lejátszót. Így elkerülheti a lejátszó és a TravelSound csatlakoztatásának a megsérülését.	Αποσύνδεση από τη βάση Κρατήστε τη συσκευή σταθερά από τις πλευρές και τραβήξτε την προς το εξώ. Μην ακουμπάτε τίποτα στην οθόνη LCD της συσκευής. Προσοχή! Κατά τη σύνδεση ή αποσύνδεση της μονάδας αποστολής ZEN X-Fi, μην στρίψετε ή περιστρέψετε τη μονάδα. Έτσι μειώνεται ο κίνδυνος πρόκλησης ζημιών στους εκκρεμότητες της μονάδας αποστολής ή και του TravelSound.	Odstánie z dokovací stanice Uložte pevně přehrávač za strany a vystruťe ho. Nevypírejte tak na displej LCD přehrávače. Upozornění: Při vložení přehrávače ZEN X-Fi do doku či vyjmutí z něj přehrávačem riskujete ani ne porušení. Snížíte tím riziko poškození konektorů přehrávače a/nebo zařízení TravelSound.	Atjungimas Laikykite leistuvą tvirtai už šonų ir ištraukite. Nepaaukite leistuvą sklygių kristaly kėtu ekranu. Įspėjimas: Pripaiginant arba atjungiant savo „ZEN X-Fi“ leistuvą, nesukiojate ir neišlenkite jo. Taip sumažėja tikimybę sugadinti leistuvą ir (arba) „TravelSound“ įrenginį.	Çıkarma Oynatıcınıza kenarlarından tutun ve kaydırarak çıkarın. Oynatıcının LCD ekranına bastmayın. Dikkat: ZEN X-Fi oynatıcısını bağlamak ya da ayırmak, oynatıcının kökününe ya da ortasına, yanına veya TravelSound bağlantısını tam gürme riskini artırır.	プレーヤーの取り出し プレーヤーの側面よりしっかりと持ち、プレーヤーをスライドで取り外します。なお、この際プレーヤーの画面を押さないようにご注意ください。 注意: ZEN X-Fi プレーヤーの取り付け・取り外し時には、プレーヤーをむっつり握りかきずらないで下さい。プレーヤーおよび TravelSound の接続部の破損の原因となります。	取下设备 器具连接设备的侧面，然后将其拔出。注意：取下设备时不要按压设备的显示屏。 注意: 当播放或取消 ZEN X-Fi 播放机时，不要扭捏或晃动播放机。这样可减少因播放机或 TravelSound 接口损坏的几率。
1 A lejátszó jelzése Zöld – A hangszóró be van kapcsolva. Sárga – A hangszóró akkumulátorja töltődik. Az akkumulátor teljes feltöltése után a jelzőlámpa kikapcsol. Piros – A hangszóró akkumulátorjának töltése alacsony.	Ενδειξη LED Πράσινο – Το ηχείο είναι ενεργοποιημένο. Κίτρινο – Η μπαταρία του ηχείου φορτίζεται. Η λυχνία LED σβήνει, όταν η μπαταρία φορτιστεί πλήρως. Κόκκινο – Η ισχύς της μπαταρίας του ηχείου είναι μικρή.	Kontrolka LED Zelená – reproduktor je pripojený k napájaniu. Žltá – batéria reproduktora sa nabíja. Keď je batéria plne nabitá, kontrolka LED sa vypne. Červená – batéria reproduktoru je takmer vybitá.	Švieslos diödu (LED) indikatoriai Zalia žviesla – garsininkas jungtas. Geltona žviesla – garsininko akumuliatoriaus įkėrimas. Raudona žviesla – garisakio baterijos gaila.	LED göstergesi Yeşil – Hoparlör açık. Sarı – Hoparlör pil seviyesi düşük. Pil seviyesi düşük LED kapandı. Kırmızı – Hoparlör pil seviyesi çok düşük.	LED インジケータ 緑色 – スピーカーの電源が入っています。 黄色 – スピーカーの充電中です。充電が完了するとLEDは消灯します。 赤色 – スピーカーの電源が切れています。	LED 指示灯 绿色 – 音箱电源已打开。 黄色 – 音箱电池充电中。当电池充满时 LED 灯熄灭。 红色 – 音箱电池电量低。
2 a A lejátszó, illetve a hangszóró újratölthető akkumulátorjának feltöltése az USB-kábel segítségével ezen keresztül. A lejátszó feltöltése Dokkolja a lejátszót a hangszóró (néhány másodperc múlva 1 kikapcsol), amikor a lejátszó teljesen feltöltődött. A hangszóró feltöltése 1 sárga lesz a töltés közben. A töltés végeztével 1 kikapcsol.	Για να φορτίσετε τη συσκευή αποστολής ή/και την επαναφορτιζόμενη μπαταρία των ηχείων με το καλώδιο USB μέσω 2. A lejátszó feltöltése Dokkolja a lejátszót a hangszóró (néhány másodperc múlva 1 kikapcsol), amikor a lejátszó teljesen feltöltődött. A hangszóró feltöltése 1 sárga lesz a töltés közben. A töltés végeztével 1 kikapcsol.	Nabíjení přehrávače a/nebo nabíjení baterie reproduktoru pomocí kabelu USB přes port 2. Nabíjení přehrávače Vložte přehrávač do doku na reproduktor (indikátor 1 za několik sekund zhasne). Až bude přehrávač úplně nabitý, rozsvítí se indikátor 2 žlutě. Nabíjení reproduktoru Indikátor 1 při nabíjení svítí žlutě. Po úplném nabití indikátor 2 zhasne.	Įkrauti grotuva ir/lar įkraunamą garsiaakio bateriją su USB laidu per 2. Garsininko įkėrimas Įdėkite garsininką į garsininko dėklą (keletis sekundų 1 išsijungs), kai grotuva visiškai įkrauta. Garsiaakio įkėrimas Indikatoriai 1 šviesi pilnai įkrauta baterijos metu. Po pilnos įkėrimo indikatoriai 2 žals.	Cihazınızın veya hoparlörünün pilini 2 üzerinden USB kablosu ile şarj etmek için. Cihaz şarj etme için Cihazı hoparlörün takın (birkaç saniye sonra 1 kapanır). Cihaz tamamen şarj olduğunda 2 sarı yanar. Hoparlörün şarj etme için Pilin bitimi aşmadan 2 sarı yanar. Tamamen şarj olduğunda, 2 kapanır.	プレーヤーまたはおよびスピーカーを充電するには、USBケーブルを2に接続します。 プレーヤーの充電 スピーカープレーヤーを接続し、数秒後、1は消灯します。プレーヤーの充電が完了すると、2は黄色になります。 スピーカーの充電 充電中、1が黄色になります。充電が完了すると、1は消灯します。	通过USB线连接2接口为您的播放机或音箱的充电。 为您的播放机充电 将播放机插入音箱（插入几秒钟后1将熄灭）。 为音箱充电 1显示黄色时，音箱正在充电。当音箱充电时，1将熄灭。
2 b Bekarçoja a hangszórót 2 zöld világ.	Ενεργοποιή το ηχείο το 2 ανάβει σε πράσινο χρώμα.	Zapne napájení reproduktora kontrolka 2 bude svítit zeleným světlem.	Įjungia garsiaakio 1 užsideja žaliai.	Hoparlörü açar 1 yeşil yanar.	スピーカーの電源を投入します 1が緑色に点灯します。	打开音箱电源 1呈绿色亮灯。
3 Hangeroség-szabályozó	Διάταξη ελέγχου έντασης	Ovládnanie hlasitosti	Garsumo valdiklis	Ses Yüklekligi Denetimi	ボリュームコントロール	音量控制
4 Zene- és adatátvitel a ZEN és a személyi számítógépr vagy hordozható számítógépr között	Για μεταφορά μουσικής/δεδομένων μεταξύ ZEN και υπολογιστή/φορητού υπολογιστή	Pre prenos údajov/Hub medzi zariadením ZEN a PC	Muzikai arba duomenims perkelti iš „Zen“ į asmeninį kompiuterį arba tvirtikčial	ZEN ve PC/Üzdevini Bilgisayararında müzik/veri transferi için	USBケーブル(別売)で接続することで、ZENとコンピュータ間で音楽ファイルやデータファイルを転送することができます。	在 ZEN 和 PC 电脑之间传输音乐/数据
MEGJEYZÉS: Ellenőrizze, hogy az ZEN megfelelően illeszkedik-e a dokkolóaljzóra, különben a hangszóró nem ad ki hangot.	Σημείωση! Βεβαιωθείτε ότι το ZEN εφρμώζεται καλά στο συσκευή του πλαιοίου σύνδεσης. Διαφορετικά, μπορεί να μην ακούγεται καθόλου ήχος.	POZNÁMKA: Uistite sa že ZEN je pevně pripojený ku konektoru v kolísku; v opačnom prípade nebude počuť zvuk.	PASTABA: patikimai, kad „ZEN“ tvirtai prijungtas prie doku jungties; kitu atveju gali nebūti garso.	NOT: ZEN'in bağlanıyı yanısıra konektörüne sıkıca oturduğundan emin olun; aksi takdirde ses duyulmayabilir.	注意: ZENがパソコン/タブレットに確実に装着されていることを確認して下さい。装着が不確実な場合、オーディオが適切に出力されません/音が低下し、	注意: ZEN 播放机牢固地插入播放插座的接口中，否则可能没有声音输出。