

MASTER GUIDE

CONTENTS

1. Package Contents / System Requirements
2. Key Features - PC
3. Installation / Registration / Technical Support
4. Configuring Your Razer Emperor - PC
5. Using Your Razer Emperor - PC
6. Safety and Maintenance
7. Legalese
8. FCC Declaration Of Conformance / WEEE Information



Congratulations on purchasing the Razer Emperor™, which inherits the same death-dealing edge as the revolutionary Razer Mamba™ and the Razer Orochi™. The Razer Emperor's right-handed ergonomic form factor stems from extensive ergonomic studies conducted with professional gamers. Gamers can now position the adjustable side buttons for optimum reach to suit their palm size and gaming grip, giving them faster reaction time when activating mission critical keys. The comfort and better fit for gaming combined empowers you to take on foes and fatigue alike – for longer gaming sessions without strain.

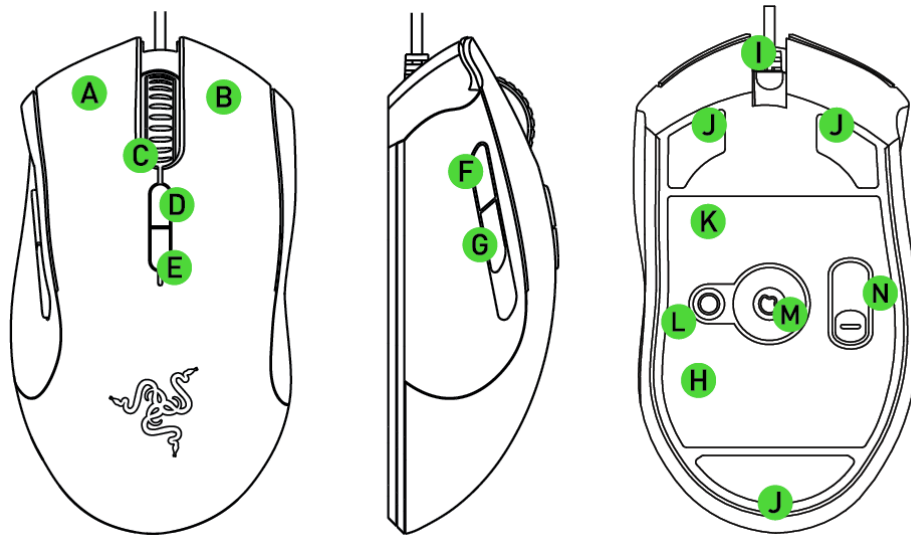
1. PACKAGE CONTENTS

- Razer Emperor Gaming Mouse
- Certificate of Authenticity
- Quick Start Guide
- Master Guide – PC
- Master Guide – Mac

SYSTEM & HARDWARE REQUIREMENTS:

- PC/Mac with USB port
- Windows XP/x64/Vista/Vista64 or Mac OS X (v10.4 and above)
- Internet connection (for driver installation)
- 35MB of free hard disk space

2. KEY FEATURES - PC

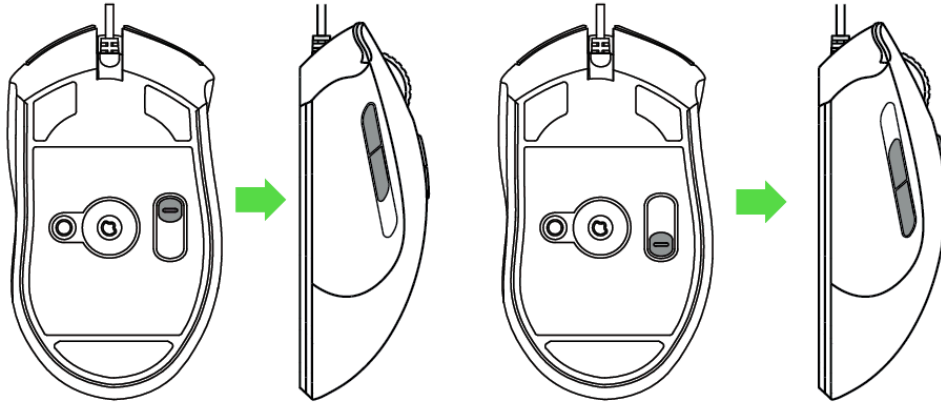


- A Mouse Button 1 – Click
- B Mouse Button 2 – Menu
- C Mouse Button 3 – Scroll Wheel and Button
- D Mouse Button 6 – Sensitivity Stage Up
- E Mouse Button 7 – Sensitivity Stage Down
- F Mouse Button 5 – Forward
- G Mouse Button 4 – Backward

- H 1000Hz Ultrapolling™ / 1ms Response Time
- I 16-Bit Ultra-Wide Data Path
- J Ultraslick™ Feet
- K Razer Synapse™ On-board Memory
- L Profile Button
- M Razer Precision™ 3.5G Laser Sensor
- N Side Button Selector Switch

ADJUSTABLE SIDE BUTTONS

Designed after extensive ergonomic studies with professional gamers, the Razer Imperator provides improved ergonomics by allowing the customized positioning of the side buttons.

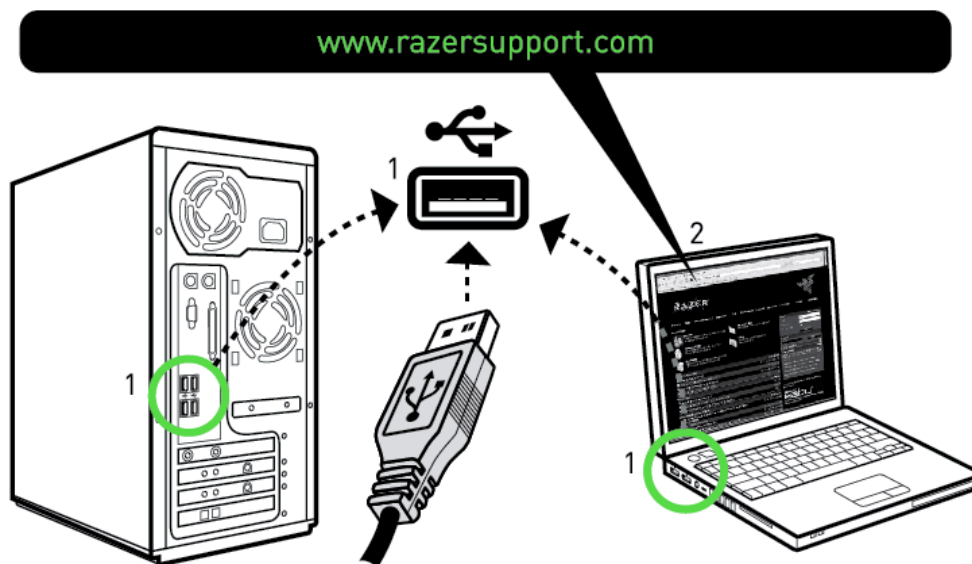


For maximum reach of the side buttons to suit various palm size and grip styles, the adjustable side buttons can be positioned by:

1. Pressing and holding the side button selector switch on the bottom of your Razer Imperator.
2. Move the side button selector switch along the slider to adjust the position of the side buttons.
3. Release the side button selector switch to lock the side buttons at the new position.

3. INSTALLATION / REGISTRATION / TECHNICAL SUPPORT

Windows® XP / x64 / Vista / Vista64 Installation Instructions



1. Plug your Razer Imperator into the USB port of your computer.
2. Download the Driver Installer from <http://www.razersupport.com/>.

3. Run the installer.
4. Choose setup language. Click OK to proceed.
5. The Razer Emperor setup screen appears. Click NEXT to proceed.
6. Read the license agreement. If you agree to all the terms, select "I accept the terms in the license agreement". Click NEXT to proceed.
7. Enter your User Name and Organization. Click NEXT to proceed.
8. Choose your installation setup. Click NEXT to proceed.
9. If everything is correct. Click INSTALL to begin installation.
10. At the end of the installation, click FINISH to complete the installation.
11. Follow the instructions onscreen to restart your computer. Click YES.

Registering your Razer Emperor

Please visit www.razerzone.com/registration/ for online product registration.

What you'll get:

- 2 years limited manufacturer's warranty
- Free online technical support at www.razersupport.com.

4. CONFIGURING YOUR RAZER IMPERATOR

RAZER SYNAPSE™ ONBOARD FUNCTIONS

All settings will be saved on the profile selected and will apply on another computer even without the Razer Configurator installed. (Note: On-The-Fly Sensitivity™ requires the Razer Emperor driver to be installed)

ASSIGN BUTTONS TAB

In the Assign Buttons tab, you can assign various functions to each of the buttons based on your own preferences.



The following functions are possible:

Click:
Perform a left mouse click.

Menu:
Open a context-sensitive menu.

Universal Scrolling:
Click once on the assigned button to activate universal scrolling. Drag your Razer Emperor to scroll in the direction of the mouse movement.

Double Click:
Perform a double click with the assigned button.



Macro:

If the button function or key is not listed, or if you would like to assign a macro to a button, select **“Macro”** from the dropdown menu. In addition, all saved macros will be shown on a sub dropdown menu for quick selection when you mouse over the **“Macro”** option.

Sensitivity Stage Up:

Switch the current sensitivity stage to the next stage.

Sensitivity Stage Down:

Switch the current sensitivity stage to the previous stage.



Profile Settings:

Switch to a profile on the fly and immediately load all your pre-configured mouse settings. When you select **“Profile Settings”** from the dropdown menu, a sub-menu will appear that allows you to choose your desired profile.

Forward:

Assign a **“Forward”** command in Windows Explorer / Internet Explorer.

Backward:

Assign a **“Back”** command in Windows Explorer / Internet Explorer.

On-The-Fly Sensitivity:

Enable change of sensitivity settings on the fly without the need to enter the configuration menu.

Single Key:

Activate a key on your keyboard.

Scroll Up:

Scroll up the page you are currently viewing.

Scroll Down:

Scroll down the page you are currently viewing.

Button Off:

Disable any function on the assigned button.

ADJUST PERFORMANCE TAB



1. Current Sensitivity

Sensitivity is how much your cursor moves on the screen in relation to your physical movement of the mouse. A higher sensitivity value would translate to less physical movement of the mouse, and vice versa.

In the ADJUST PERFORMANCE tab, the current sensitivity of your Razer Imperator is indicated in dots per inch (DPI) and can be easily adjusted by moving the arrow along the slider in steps of 100DPI and up to 5600DPI.

To set a different sensitivity level in the X and Y axis, you can select the “**Enable independent X-Y sensitivity**” option and move the individual X and Y arrows along the slider.

To display the On-The-Fly Sensitivity indicator onscreen whenever you make changes on the fly, select the “**Enable On-The-Fly sensitivity on-screen display**” option.



2. Acceleration

Acceleration is an internal filter of the driver, and is primarily a legacy option for low dpi mice users. With acceleration enabled, the faster you swipe the mouse, additional movement is added. Windows XP has acceleration turned on by default as a convenience for users assuming that everyone will have 400dpi mice, but this will likely be a hindrance to most gamers and precision users who require greater accuracy. The ‘acceleration off’ option (default) turns off internal acceleration only and does not affect Windows XP acceleration, which can be turned off via the Control Panel, Mouse, Pointer Options, and unselecting ‘Enhance Pointer Precision’. You can activate acceleration by checking the “**Enable**

Acceleration” box and moving the arrow along the slider.

3. Polling Rate

The polling rate determines the time intervals that the PC retrieves data from your mouse. A higher value would mean shorter intervals and therefore less latency. You can switch between 125Hz (8ms), 500Hz (2ms) and 1000Hz (1ms) by clicking on the individual polling rate buttons.

MANAGE PROFILES TAB



A profile allows you to store your various mouse settings such as sensitivity, button assignments and macros as a single group for your convenience. In addition, you can also set your Razer Imperator to change profiles once a particular program is launched.

In the Manage Profiles tab, you can create and activate customized profiles based on the application you have launched.

- Profile:** Indicates the profile number
- Profile Name:** Double-click this field to enter a profile name of your choice.
- Application:** Right-click on this field and select “Assign Application” to open up directory browsing. Select the executable file of the program you want the profile to be tied to.

- Auto Switch:** Check the box to enable automatic profile switching when the chosen application is launched.

With your Razer Imperator, you can create and save five profiles using Razer Synapse. In addition, you can save as many profiles are you like on your computer and import it back to your Razer Imperator. However at any one time, only five profiles can be stored on your Razer Imperator.

Right-clicking on any profile allows you to quickly access a list of extra commands.



MANAGE MACROS TAB



A macro is a sequence of keystrokes executed in a particular order and timing. It allows you to execute a chain of commands, with the press of just one button for faster response in your games. Macros can be up to eight characters in length, and other tasks such as media functions can be assigned.

In the Manage Macros tab, you can record as many macros as you want on your computer.

LIGHTING AND MAINTENANCE



Lighting

Turn on/off the scroll button and Razer logo lights on the Razer Imperator

Maintenance

Update the Razer driver and firmware software by clicking on the “**Check for Updates**” button. This will connect you to www.razersupport.com for the latest driver/firmware downloads.

4. USING YOUR RAZER IMPERATOR

SETTING SENSITIVITY STAGES

A sensitivity stage is a preset sensitivity value you can swap to on-the-fly. This means you can change between multiple pre-defined sensitivities instantly by toggling between sensitivity stages.



To preset a sensitivity stage:

1. Load the Razer Configurator and click on the “**Adjust Performance**” tab.
2. Click on the “**Sensitivity Stage**” button. A Sensitivity Stage Settings pop up box will appear.
3. Select the number of sensitivity stages needed.
4. Click on the stage you would like to preset and adjust using the arrow on the slider below.
5. Click “**Apply**” when done. To switch between different sensitivity stages, simply assign the Sensitivity Stage Up and Sensitivity Stage Down functions to the desired buttons.

CREATING MACROS

- A. Load the Razer Configurator and click on the “**Manage Macros**” tab.
- B. Click “**Record**” to start creating a macro.
- C. Type in the desired sequence of keystrokes, then click “**Stop**” to end the recording.
- D. Right-click on the recorded keystroke to access more options.
- E. You can also insert additional commands by clicking on the “**Advanced**” button.
- F. Click “**Apply**” when done.

SWITCHING PROFILES

You can switch between profiles in three ways:

- a. By selecting the active profile in the Razer Imperator driver software.
- b. By assigning the function to a button via the Razer Configurator in the main window.





- c. By using the Profile button located at the bottom of the mouse. Pressing the Profile button will cycle through the stored profiles in the Razer Imperator.

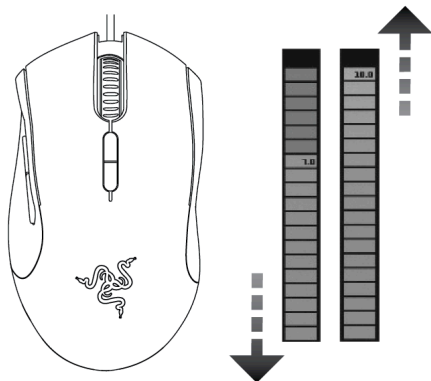
Example 1: Selecting Profile 5 to be activated upon loading of Program A

1. Open up the Razer Imperator Driver Control.
2. Click on the “**Manage Profiles**” tab.
3. Select Profile 5.
4. Under Profile Name, double-click the field to enter name for the profile.
5. Under Application, double-click to open up the directory browser to locate the executable file for Program A.
6. Check the auto-switching option for Profile 5 to activate auto-switching.
7. Click OK.

When the active profile is switched, the Razer Imperator will flash the corresponding number of

times – For example, if Profile 3 is activated, the mouse will flash three times to indicate the profile you have selected.

ON-THE-FLY SENSITIVITY



On-The-Fly Sensitivity is a feature that allows you to fine-tune your sensitivity settings even in the midst of gameplay. If On-The-Fly Sensitivity has been assigned to a button, pressing that assigned button and moving the scroll wheel will produce a bar at the lower right-hand corner of your screen. While this feature allows you to dynamically adjust your sensitivity settings, it is accessible only if the driver is installed.

6. SAFETY AND MAINTENANCE

Safety Guidelines

In order to achieve maximum safety while using your mouse, we suggest that you adopt the following guidelines:

1. Avoid looking directly into the tracking beam of your mouse or pointing the beam in any one else's eye. Note that the tracking beam is NOT visible to the naked human eye and is set on an always-on mode.
2. Should you have trouble operating the mouse properly and troubleshooting does not work, unplug the device and contact the Razer hotline or go to www.razersupport.com for support. Do not attempt to service or fix the device yourself at any time.
3. Do not take apart the mouse (doing so will also void your warranty) and do not attempt to service it yourself or operate it under abnormal current loads.
4. Keep your mouse away from liquid, humidity or moisture. Operate your mouse only within the specified temperature range of 0°C(32°F) to 40°C(104°F). Should you operate it in a temperature that is beyond this range, unplug and switch off the device in order to let the temperature stabilize within the optimal temperature range.

COMFORT

Here are some tips to ensure that you are comfortable while using your mouse. Research has shown that long periods of repetitive motion, improper positioning of your computer peripherals, incorrect body position, and poor habits may be associated with physical discomfort and injury to nerves, tendons, and muscles. Please follow these guidelines to ensure comfortable use of your mouse and avoid injury.

1. Position your keyboard and monitor directly in front of you with your mouse next to it. Place your elbows next to your side, not too far away and your mouse within easy reach.
2. Adjust the height of your chair and table so that the keyboard and mouse are at or below elbow height.
3. Keep your feet well supported, posture straight and your shoulders relaxed.
4. During gameplay, relax your wrist and keep it straight. If you do the same tasks with your hands repeatedly, try not to bend, extend or twist your hands for long periods.
5. Do not rest your wrists on hard surfaces for long periods. Use a wrist rest to support your wrist while gaming.
6. Customize the buttons on your mouse to suit your style of gaming in order to minimize repetitive or awkward motions while gaming.
7. Make sure that your mouse fits comfortably in your hands.
8. Do not sit in the same position all day. Get up, step away from your desk and do exercises to stretch your arms, shoulders, neck and legs.
9. If you should experience any physical discomfort while using your mouse, such as pain, numbness, or tingling in your hands, wrists, elbows, shoulders, neck or back, please consult a qualified medical doctor immediately.

MAINTENANCE AND USE

The Razer Emperor is equipped with a laser sensor, which has a tracking beam that is invisible to the naked human eye. There is a little regular maintenance to keep the Razer Emperor in optimum condition. Once a month we recommend you unplug the mouse from the USB port and clean the lens below the Razer Emperor with a soft cloth or cotton swab. Use a little warm water but no soap or harsh cleaning agents.

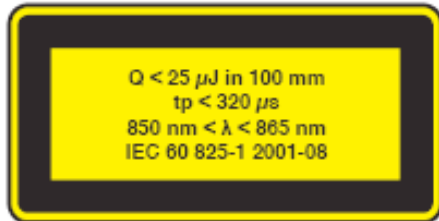
To get the ultimate experience in movement and control, we highly recommend a premium mousing surface from Razer. Some surfaces will cause undue wear on the feet requiring constant care and eventual replacement.

Do note that the sensor of the Razer Imperator is 'tuned' or optimized especially for the Razer mousing surfaces. This means that the sensor has been tested extensively to confirm that the Razer Imperator reads and tracks best on Razer mousing surfaces. Other premium mousing surfaces from companies like Everglide™ may work just as well.



Class 1M laser products

International standards and safety. INVISIBLE LASER RADIATION: DO NOT VIEW DIRECTLY WITH OPTICAL INSTRUMENTS. Class 1m laser products comply with International Standard IEC 60825-1 Ed 2: 2007, Class 1M Laser Product Invisible and also complies with 21 CFR 1040.10 and 1040.11 except for deviations pursuant to Laser Notice No. 50, dated June 24, 2007.



Safety and usage guidelines for laser products

Do not direct laser beam toward eye. For Class 1M laser products, viewing laser output with optical instruments (e.g., eye loupes, magnifiers, and microscopes) within a distance of 100mm may posed an eye hazard.

7. LEGALESE

COPYRIGHT AND INTELLECTUAL PROPERTY INFORMATION

©2009 Razer USA Ltd. Patent Pending. All Rights Reserved. Razer™, the Razer Triple-Headed Snake logo, the Razer distressed word logo, Imperator™ and other trademarks contained herein are the property of Razer USA Ltd and/or its affiliated or associated companies, registered in the United States and/or other countries. Mac OS, Mac and the Mac logo are trademarks or registered trademarks of Apple Inc., registered in the U.S. and other countries. All other trademarks are the property of their respective owners. Razer USA Ltd ("Razer") may have copyright, trademarks, trade secrets, patents, patent applications, or other intellectual property rights (whether registered or unregistered) concerning the product in this Manual. Furnishing of this Manual does not give you a license to any such copyright, trademark, patent or other intellectual property right. The Razer Imperator product (the "Product") may differ from pictures whether on packaging or otherwise. Razer assumes no responsibility for such differences or for any errors that may appear. Information contained herein is subject to change without notice.

LIMITED PRODUCT WARRANTY ("Limited Warranty")

Limited Warranty. Razer warrants the Product to be free from defects in materials and workmanship (subject to the terms set forth herein) for the applicable warranty period from the date of retail purchase.

Exclusions and Limitations. This Limited Warranty will not apply if a claim is made arising from any unacceptable use or care of the Product, including (without limitation) misuse, abuse, negligence, acts of God, unauthorized modification or repair, unauthorized commercial use and any operation of the Product outside Razer's recommended parameters. This Limited Warranty is also invalid if any serial number or date stamp on the Product has been altered, obliterated or removed. Cosmetic damage is not covered.

Exclusive Remedies. If an eligible claim on the Limited Warranty is received by Razer within the applicable warranty period, Razer will (at its sole option) either (a) repair the Product or the defective parts at no charge, using new or refurbished replacement parts, or (b) exchange the Product with a Product that is new or which has been manufactured from new or serviceable used parts and is at least functionally equivalent to the original Product. Where the Product is an “end of life” product model, Razer may (at its sole option) exchange the Product with a functionally equivalent substitute model from Razer’s current product range. Such repairs or exchanges are your exclusive remedies for your warranty claim. Proof of purchase in the form of a bill, invoice or receipt shall be required as evidence of the date of retail purchase.

Entire Warranty. The express terms of this Limited Warranty are in lieu of all warranties, conditions, undertakings and obligations implied by statute, common law, custom, trade usage, course of dealing or otherwise, all of which are hereby excluded to the fullest extent permitted by law. No Razer supplier, dealer, agent, or employee is authorized to alter or extend the terms of this Limited Warranty or to make any representation whatsoever.

Help Resources. Before lodging a claim on the Limited Warranty, please review the online help resources at www.razersupport.com. If the Product is still not functioning properly after making use of these resources, please contact Razer through www.razersupport.com or your authorized distributor or dealer. You may be required to assist with the diagnosis process to verify and ascertain any issues which you may be facing with the Product. Service options, parts availability and response times may vary depending on the country in which the warranty claim is lodged. You may be responsible for shipping and handling charges as well as any applicable customs, duties or taxes if shipment and handling of the Product is required.

LIMITATION OF LIABILITY

Razer shall in no event be liable for any lost profits, loss of information or data, special, incidental, indirect, punitive or consequential or incidental damages, arising in any way out of distribution of, sale of, resale of, use of, or inability to use the Product. In no event shall Razer’s liability exceed the purchase price of the Product.

GENERAL

These terms shall be governed by and construed under the laws of the jurisdiction in which the Product was purchased. If any term herein is held to be invalid or unenforceable, then such term (in so far as it is invalid or unenforceable) shall be given no effect and deemed to be excluded without invalidating any of the remaining terms.

COSTS OF PROCUREMENT

For the avoidance of doubt, in no event will Razer be liable for any costs of procurement unless it has been advised of the possibility of such damages, and in no case shall Razer be liable for any costs of procurement liability exceeding the purchase price of the Product.

8. FCC DECLARATION OF CONFORMANCE

This equipment has been tested and found to comply with the limits for a Class B digital device, pursuant to part 15 of the FCC Rules. These limits are designed to provide reasonable protection against harmful interference in a residential installation. This equipment generates, uses and can radiate radio frequency energy and, if not installed and used in accordance with the instructions, may cause harmful interference to radio communications. However, there is no guarantee that interference will not occur in a particular installation. If this equipment does cause harmful interference to radio or television reception, which can be determined by turning the equipment off and on, the user is encouraged to try to correct the interference by one or more of the following measures:

Reorient or relocate the receiving antenna.
Increase the separation between the equipment and the receiver.
Connect the equipment into an outlet on a circuit different from that to which the receiver is connected.
Consult the dealer or an experienced radio TV technician for help.

For more information, refer to the online help system on www.razerzone.com.

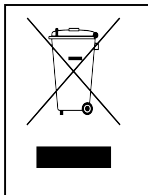


STATEMENT OF COMPLIANCE WITH EU DIRECTIVE

Hereby, Razer (Europe) GmbH, declares that this Razer Imperator™ Ergonomic Laser Gaming Mouse is in compliance with the essential requirements and other relevant provisions of Directive 2004/108/EC.

The full Declaration of Conformity can be requested via the following :

Company : Razer (Europe) GmbH
Address : Winterhuder Weg 82, D-22085
Hamburg, Germany
E-mail : compliance@razerzone.com



ENGLISH

Correct Disposal of This Product (Waste Electrical & Electronic Equipment)

(Applicable in the European Union and other European countries with separate collection systems)

This marking shown on the product or its literature, indicates that it should not be disposed with other household wastes at the end of its working life. To prevent possible harm to the environment or human health from uncontrolled waste disposal, please separate this from other types of wastes and recycle it responsibly to promote the sustainable reuse of material resources. Household users should contact either the retailer where they purchased this product, or their local government office, for details of where and how they can take this item for environmentally safe recycling. Business users should contact their supplier and check the terms and conditions of the purchase contract. This product should not be mixed with other commercial wastes for disposal.