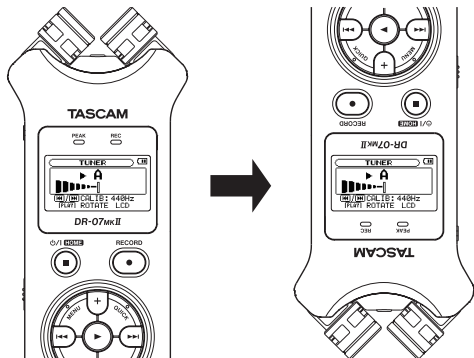


取扱説明書の追加

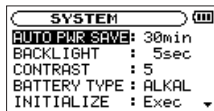
90ページ：楽器をチューニングする
(チューナー)の機能追加

チューナーが使いやすくなりました。

“TUNER”画面表示中にPLAYボタンを押すと画面の上下が反転します。内蔵マイクをチューナー使用者に向けたときに表示がわかりやすくなりました。



取扱説明書の訂正

96ページ：電源のオートオフ設定の
記述内容の訂正

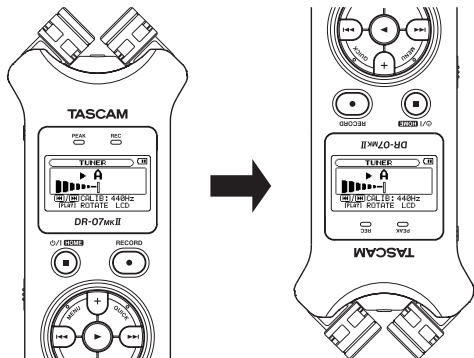
- 電源のオートオフ設定の項目名の訂正
(誤) “AUTO OFF”
(正) “AUTO PWR SAVE”
- 選択肢の初期値の変更
(誤) “OFF” (初期値、自動オフしない)、“3min”、“5min”、“10min”、“30min”
(正) “OFF”、“3min”、“5min”、“10min”、“30min” (初期値)

Owner's Manual Additional Information

Page 103: New function for "9-Tuning a Musical Instrument (Tuner)"

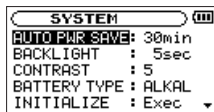
The tuner is now easier to use.

When the TUNER screen is open, you can press the **PLAY** button to reverse the screen orientation, making it easier to tune using the built-in mic.



Owner's Manual Correction

Page 109: Revisions in "Turning the unit power OFF automatically"



- Revision of the automatic power saving setting item name

Correct: AUTO PWR SAVE

Incorrect: AUTO OFF

- Change to the factory setting

Correct: Options: OFF, 3min, 5min, 10min, 30min (factory setting)

Incorrect: Options: OFF (factory setting—the unit does not automatically turn OFF), 3min, 5min, 10min, 30min